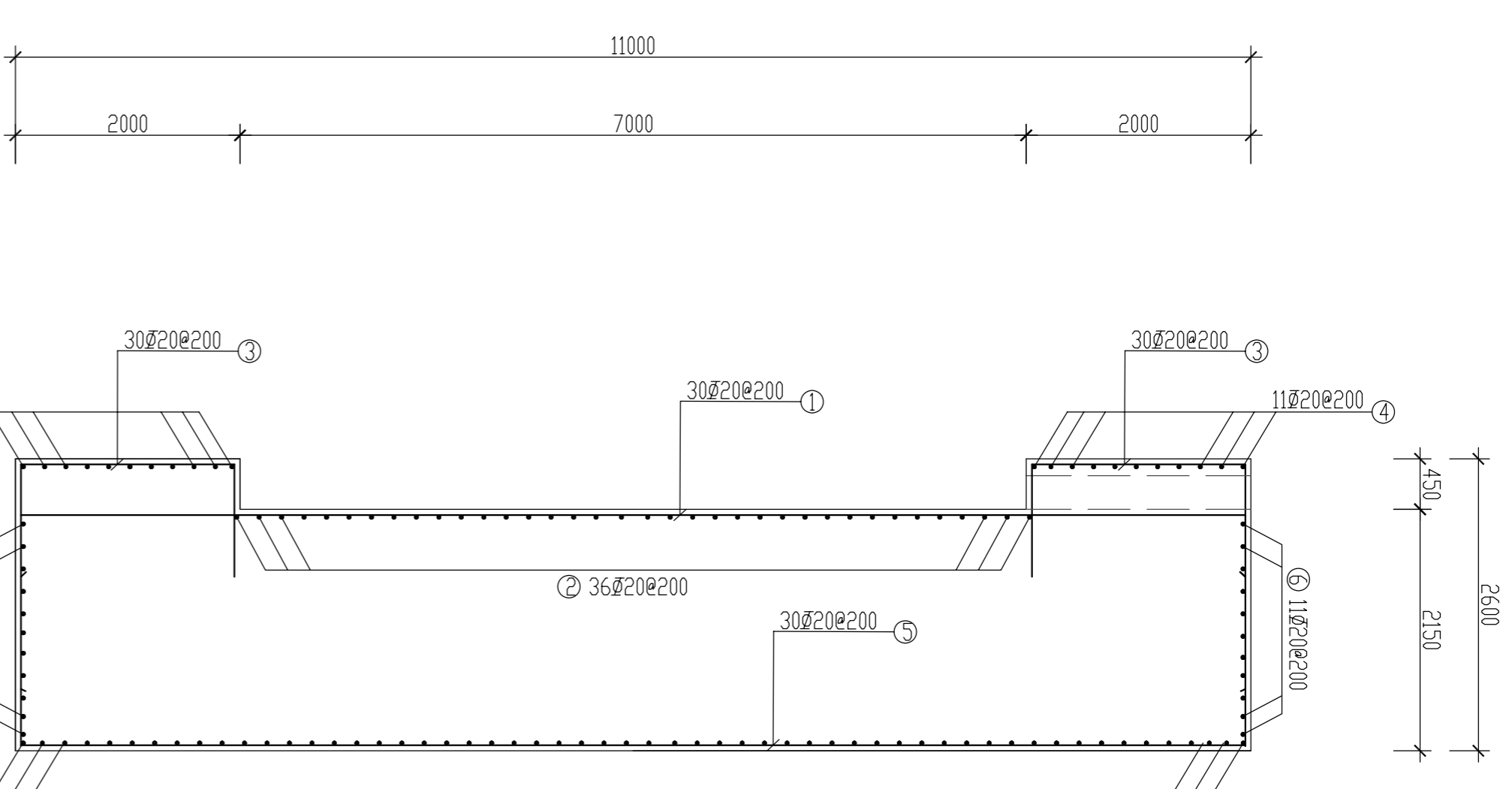


Reinforcement Plan of Traction Transition Block

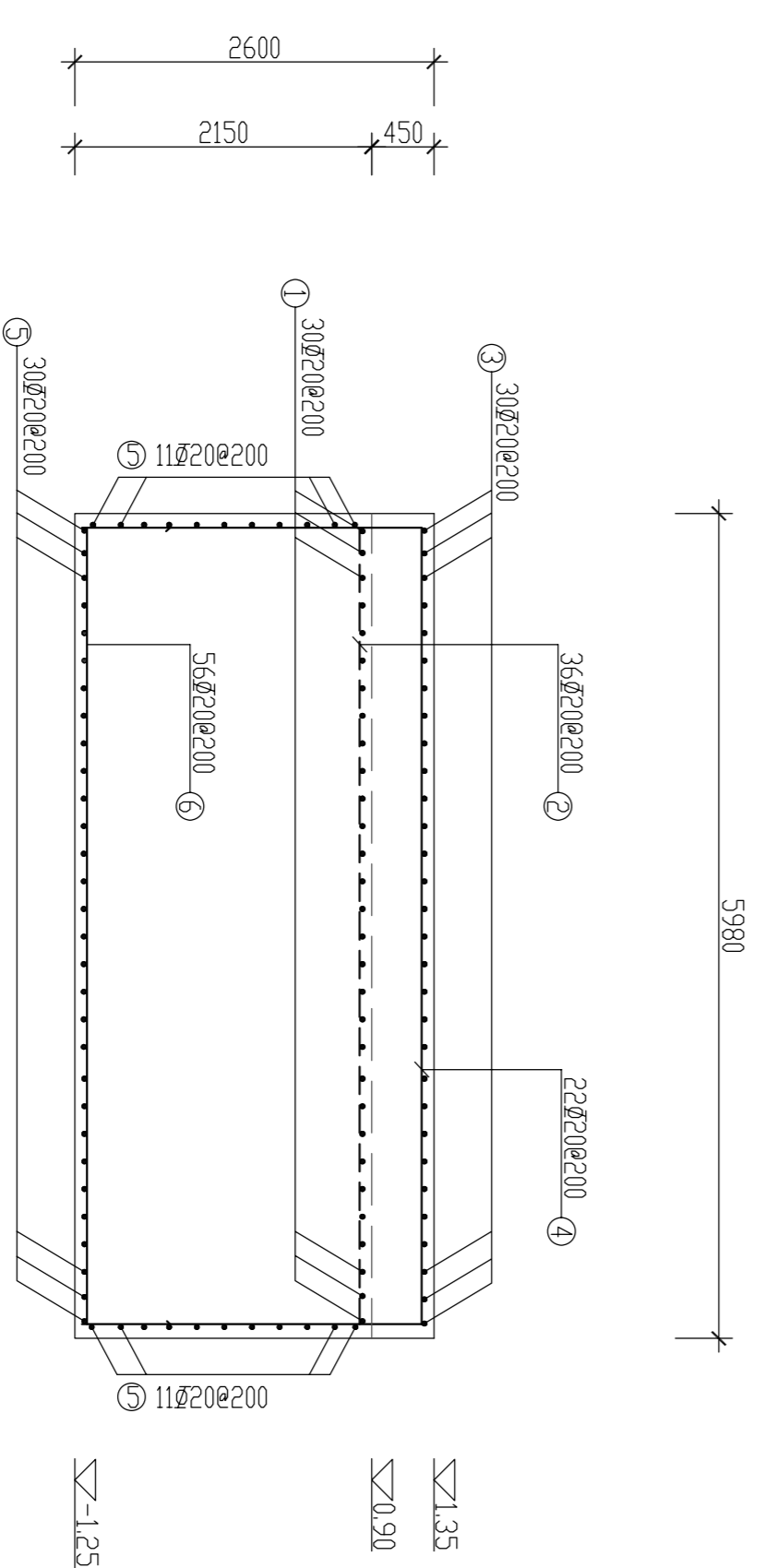


2-2

Material List

No	Specimen	Dimensional Length (mm)	Quantity	Total Length(m)	Weight (kg)
①	30#	1890	30	450.0	1111.5
②	30#	3610	36	356.4	880.3
③	10#	1900	60	234.0	578.0
④	11#	3610	22	237.6	586.9
⑤	60#	1900	52	629.2	1554.1
⑥	60#	3610	78	549.1	1365.3

Total Total reinforcement quantity is 5061kg. The volume of concrete is 527.2m³



1-1

- Note:
- Dimensions in drawings are in millimeters, levels in drawings are in meters, levels are based on local sea level;
 - Concrete grade is C30;
 - 3" Φ ⅝ ribbed bar of Grade II;
 - The dimension of steel shall be measured from outer surface. Main reinforcement net cover is uniformly 30mm;
 - The reserved position of limitation wheel are detailed in Traction Area Structural Drawing of Inland Frame Vehicle.

Tianjin Port Engineering Design and Consulting Ltd of China Communication Construction Company			
Principal of Project	Date	Project Name	Scale
Approved By	Date	Scale	1:30
Chief Designer	Date	Project Subjects	Sheet No.
Checked By	Date	Date	1:30
Corrected By	Date	Design Name	Sheet No.
Designed By	Date	Traction Transition Block Reinforcement Drawing	1:30
Plotted By	Date		1:30