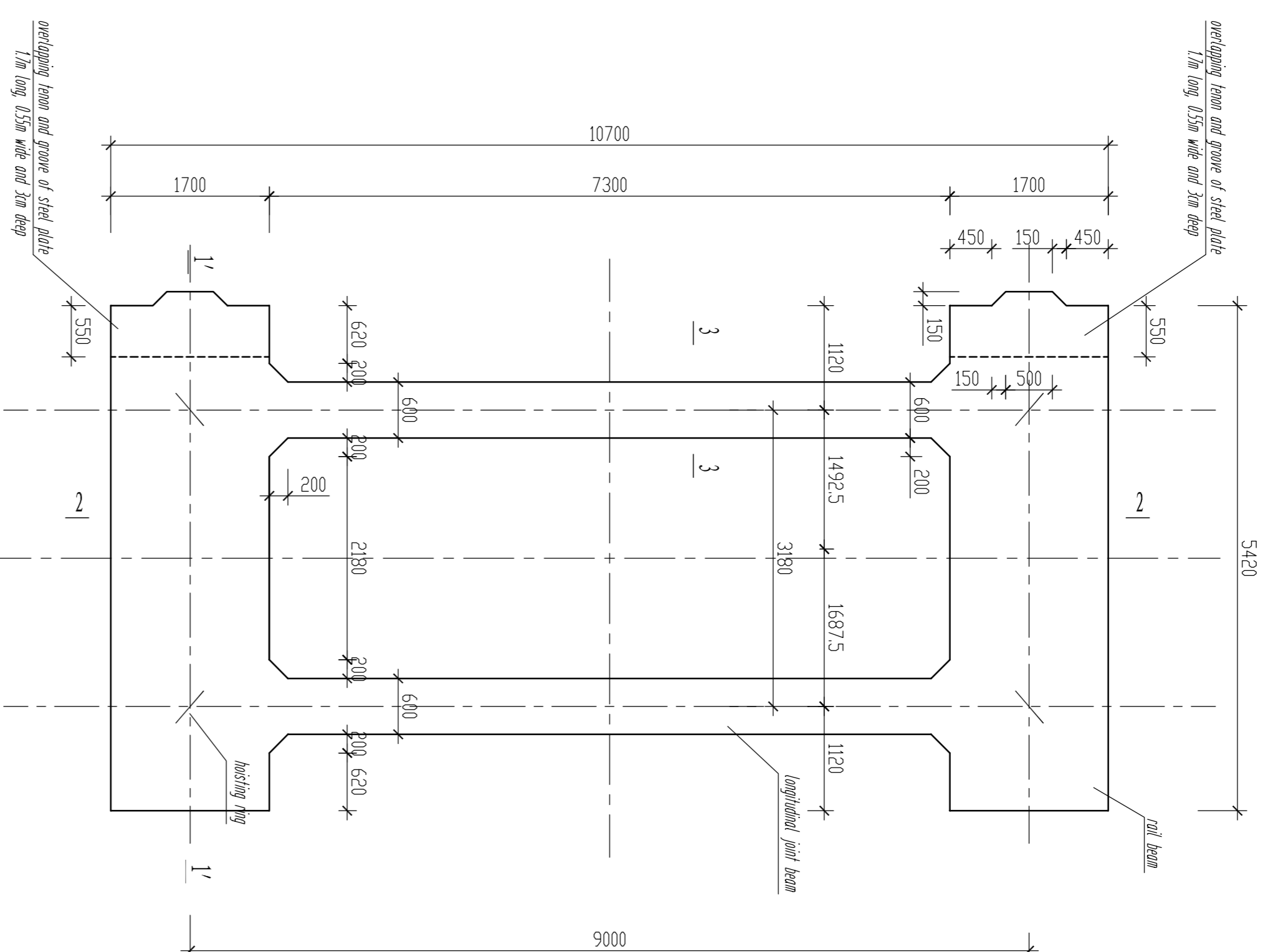
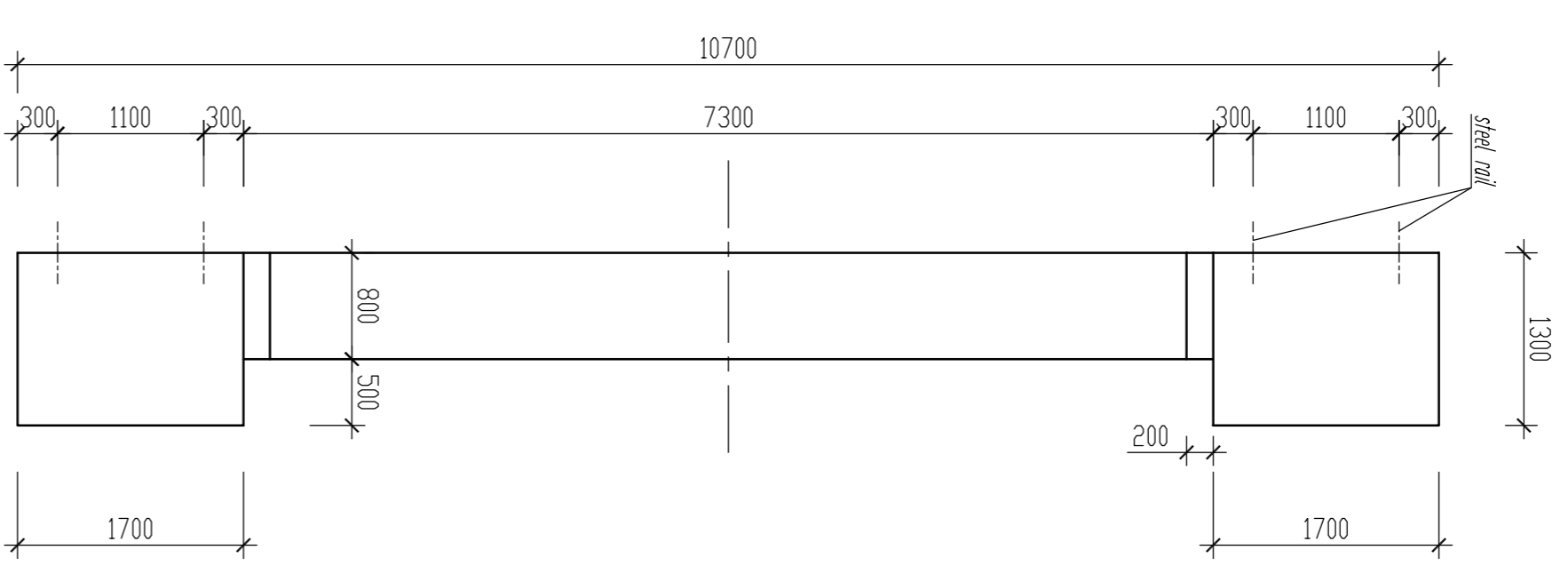


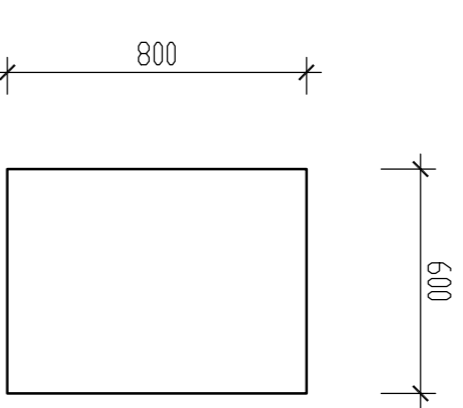
Top Header Structural Drawing of Slipway Grillage Beam 1:50



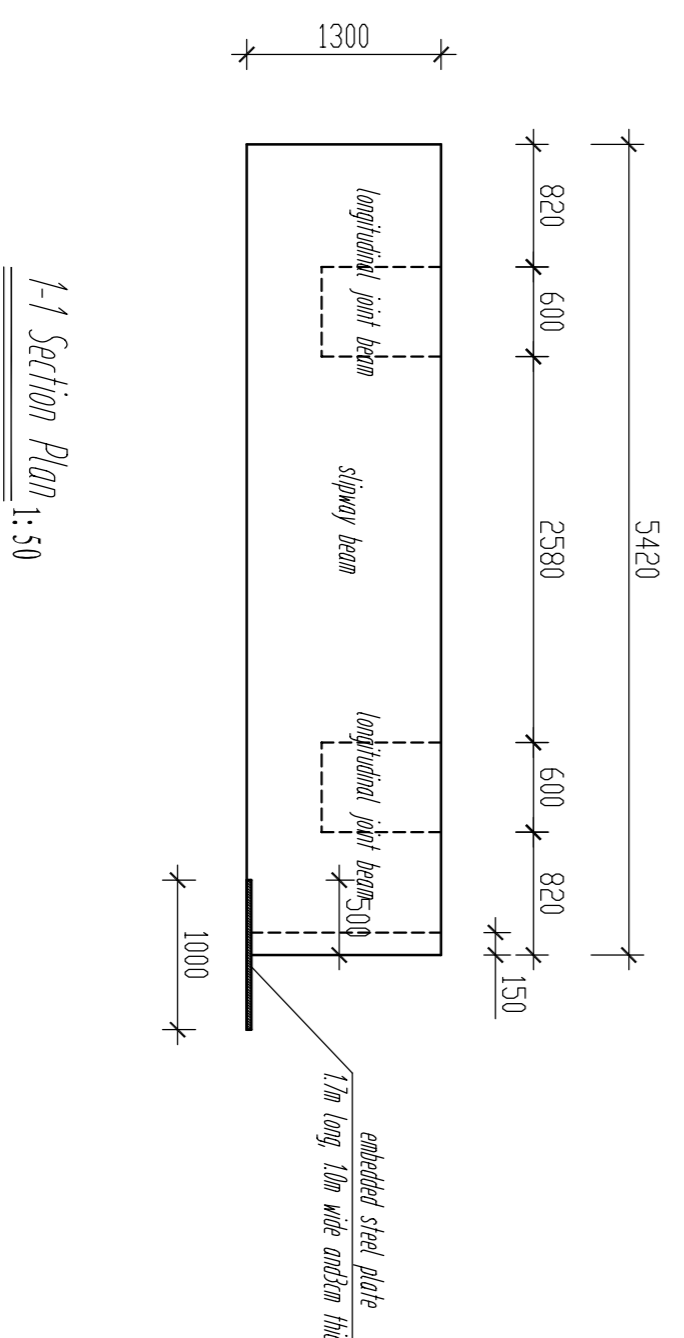
Down header structural drawing of slipway grillage beam 1:50



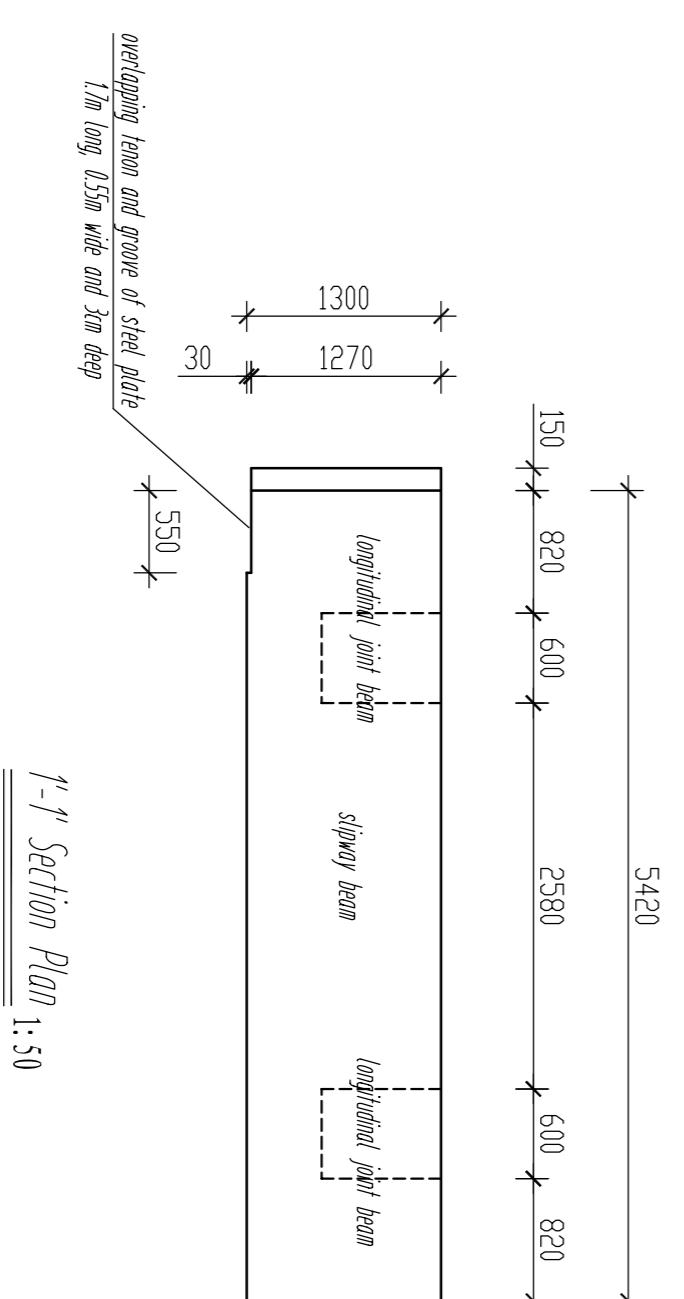
2-2 Section Plan 1:50



3-3 Section Plan 1:25



1-1 Section Plan 1:50



1'-1' Section Plan 1:50

- Note:
1. Dimensions in drawings are in millimeters.
 2. The total length of slipway is 9819 including 30 pieces of 588mm long special section grillage beam and two 588mm long grillage beam on both sides. The installation joint of grillage beam is 7mm.
 3. Concrete grade of precast component is C30.
 4. Buffer blocks (total 4) shall be paid attention to reservation while predecoration of bottom end of slipway grillage beams. Details are referred to "General Structural Drawing of Buffer Block" (TZ-31).

Tianjin Port Engineering Design and Consulting Ltd of China Communication Construction Company			
Project No.	Project Name	Scale	Project No.
CP-46-110	Shanghai International Airport Terminal Reconstruction and Upgrade	1:50	CP-46-110
Checked By	Project Subject	Scale	Checked By
Checked By	Project Subject	Scale	Checked By
Designed By	Drawing Name	Scale	Designed By
Designed By	End Section Slipway Grillage Beam Structure Drawing	Scale	Designed By
Plotted By	Plotting Date	Scale	Plotted By
Plotted By	Plotting Date	Scale	Plotted By